

e-ISSN: 2980-1397

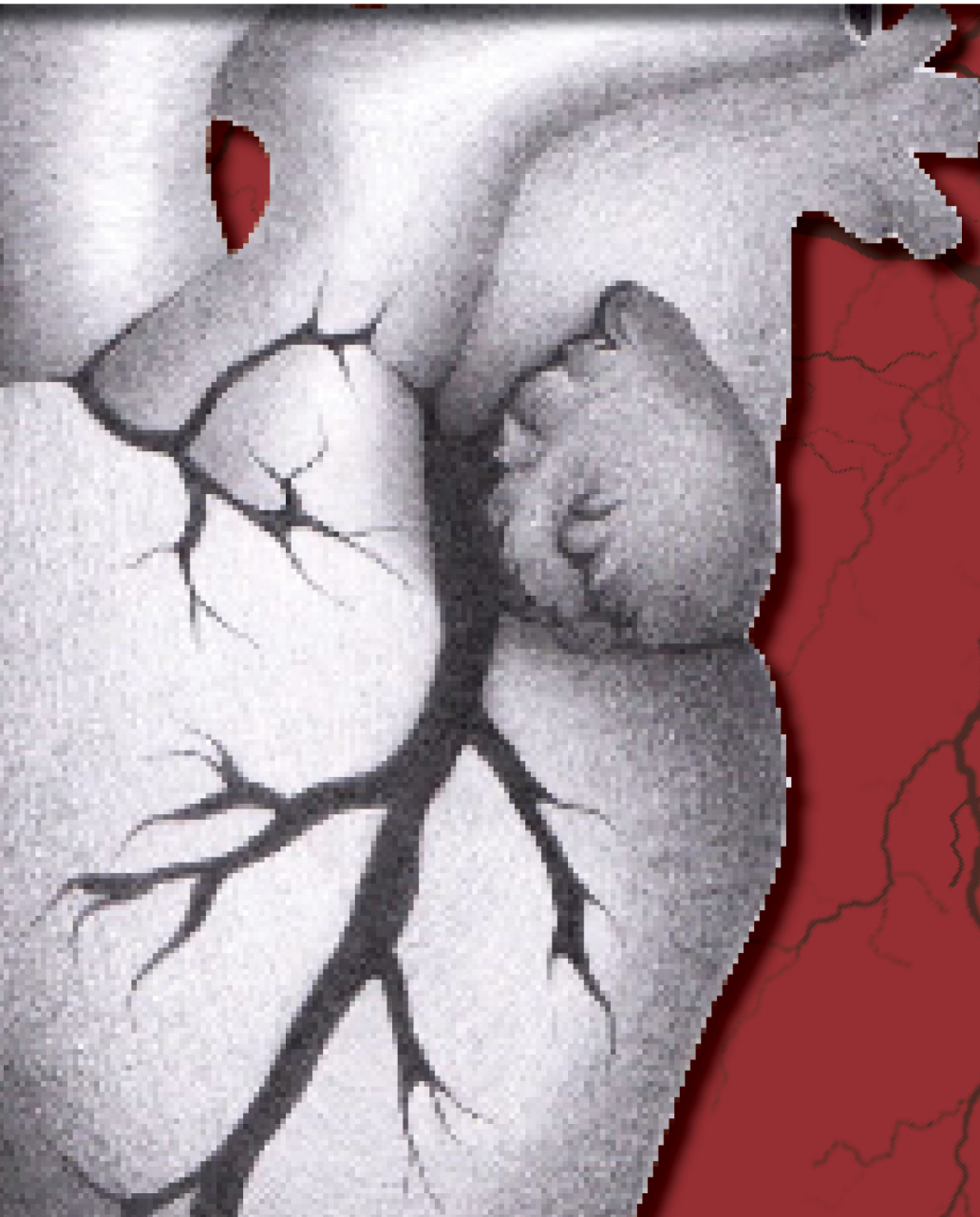
Journal of  
**CARDIOLOGY & CARDIOVASCULAR  
SURGERY**

Volume: 2

Issue:4

Year: 2024

JCCVS



## EDITOR-IN-CHIEF

### Assoc. Prof. İbrahim Halil İNANÇ

Department of Cardiology, Phoenixville Hospital, Towerhealth, Phoenixville, USA

## ASSOCIATE EDITORS-IN-CHIEF

### Assoc. Prof. Cengiz ŞABANOĞLU

Department of Cardiology, Ümraniye Training and Research Hospital, University of Health Sciences, İstanbul, Türkiye

### Assoc. Prof. Esra POLAT

Department of Cardiology, Dr Ersin Arslan Training and Research Hospital, Gaziantep, Türkiye

### Assist. Prof. Hüseyin KANDEMİR

Department of Cardiology, Faculty of Medicine, Kırıkkale University, Kırıkkale, Türkiye

### Assoc. Prof. Şaban KELEŞOĞLU

Department of Cardiology, Faculty of Medicine, Erciyes University, Kayseri, Türkiye

### Assoc. Prof. Yücel YILMAZ

Department of Cardiology, Kayseri City Hospital, Kayseri, Türkiye

## EDITORIAL BOARD

### Spec. Anand M. KRISHNAN, MD

Department of Cardiology, University of Vermont Medical Center, Burlington, Vermont, USA

### Assist. Prof. Ajar KOÇAK

Department of Cardiology, Faculty of Medicine, Ufuk University, Ankara, Türkiye

### Prof. Aydın ÇİFCİ

Department of Internal Medicine, Faculty of Medicine, Kırıkkale University, Kırıkkale, Türkiye

### Spec. Ayşe HOŞOĞLU, MD

Department of Cardiology, Başkent University Ankara Hospital, Ankara, Türkiye

### Spec. Bilge Nazar ATEŞ, MD

Department of Cardiology, Ankara Bilkent City Hospital, Ankara, Türkiye

### Spec. Deniz MUTLU, MD

Department of Cardiology, Faculty of Medicine, İstanbul University Cerrahpaşa, İstanbul, Türkiye

### Assist. Prof. Enes ALIÇ

Department of Cardiology, VM Medical Park Pendik Hospital. Faculty of Medicine, İstanbul Aydın University, İstanbul, Türkiye

### Spec. Ersin DOĞANÖZÜ, MD

Department of Cardiology, 29 Mayıs State Hospital, Ankara, Türkiye

### Spec. Fulden Akyüz İNANÇ, MD

Department of Respiratory Diseases, Faculty of Medicine, Kırıkkale University, Kırıkkale, Türkiye

**Spec. Haşim TÜNER, MD**

*Department of Cardiology, Memorial Bahçelievler Hospital, İstanbul, Türkiye*

**Spec. Hüseyin DEMİRTAŞ, MD**

*Department of Cardiovascular Surgery, Faculty of Medicine, Gazi University, Ankara, Türkiye*

**Spec. Hüseyin KANDEMİR, MD**

*Department of Cardiology, Kırıkkale Yüksek İhtisas Hospital, Kırıkkale, Türkiye*

**Prof. İbrahim ECE, MD**

*Department of Pediatric Cardiology, Ankara Bilkent City Hospital, Ankara, Türkiye*

**Spec. İbrahim Çağrı KAYA, MD**

*Department of Cardiovascular Surgery, Eskişehir City Hospital, Eskişehir, Türkiye*

**Assoc. Prof. İbrahim Etem ÇELİK**

*Department of Cardiology, Ankara Training and Research Hospital, University of Health Sciences, Ankara, Türkiye*

**Prof. Kaan KAYA**

*Department of Cardiovascular Surgery, Ankara Etlik City Hospital, Ankara, Türkiye*

**Prof. Kaan OKYAY**

*Department of Cardiology, Başkent University Ankara Hospital, Faculty of Medicine, Başkent University, Ankara, Türkiye*

**Assoc. Prof. Mehmet KARAHAN**

*Department of Cardiovascular Surgery, Ankara Bilkent City Hospital, Faculty of Medicine, Yıldırım Beyazıt University, Ankara, Türkiye*

**Prof. Mehmet Ali KOBAT**

*Department of Cardiology, Faculty of Medicine, Fırat University, Elazığ, Türkiye*

**Spec. Mesut KARATAŞ, MD**

*Department of Cardiology, Koşuyolu Yüksek İhtisas Training and Research Hospital, İstanbul, Türkiye*

**Prof. Murat TULMAÇ**

*Department of Cardiology, Liv Hospital Ankara, Ankara, Türkiye*

**Assist. Prof. Murat Abdulhamit ERCİŞLİ**

*Department of Cardiovascular Surgery, Faculty of Medicine, Adıyaman University, Adıyaman, Türkiye*

**Assoc. Prof. Mustafa ŞAHİN**

*Department of Medical Biochemistry, Çorum Hitit University Erol Olçok Training and Research Hospital, Faculty of Medicine, Hitit University, Çorum, Türkiye*

**Prof. Mustafa DURAN**

*Department of Cardiology, Ankara Training and Research Hospital, University of Health Sciences, Ankara, Türkiye*

**Spec. Mustafa KARAKURT, MD**

*Department of Cardiology, Kırıkkale Yüksek İhtisas Hospital, Kırıkkale, Türkiye*

**Assoc. Prof. Mustafa SABAK**

*Department of Emergency Medicine, Faculty of Medicine, Gaziantep University, Gaziantep, Türkiye*

**Spec. Osman Fehmi BEYAZAL, MD**

*Department of Cardiovascular Surgery, Başakşehir Çam ve Sakura City Hospital, İstanbul, Türkiye*

**Assoc. Prof. Selçuk ÖZTÜRK**

*Department of Cardiology, Kırıkkale Yüksek İhtisas Hospital, Kırıkkale, Türkiye*

**Assoc. Prof. Serhat KOCA**

*Department of Pediatric Cardiology, Ankara Bilkent City Hospital, Ankara, Türkiye*

**Assist. Prof. Şevki Mustafa DEMİRÖZ**

*Department of Thoracic Surgery, Faculty of Medicine, Gazi University, Ankara, Türkiye*

**Prof. Tahir DURMAZ**

*Department of Cardiology, Ankara Bilkent City Hospital, Faculty of Medicine, Yıldırım Beyazıt University, Ankara, Türkiye*

**Assoc. Prof. Ufuk MUNGAN**

*Department of Cardiovascular Surgery, Ankara Etlik City Hospital, Ankara, Türkiye*

**Spec. Uğur SAYGISUNAR, MD**

*Department of Cardiology, Medicana International İzmir Hospital, İzmir, Türkiye*

**Assist. Prof. Ünal ÖZTÜRK**

*Department of Cardiology, Faculty of Medicine, Sütçü İmam University, Kahramanmaraş, Türkiye*

**Assoc. Prof. Yıldırım GÜLTEKİN**

*Department of Cardiovascular Surgery, Eskişehir City Hospital, Eskişehir, Türkiye*

**Assoc. Prof. Yücel YILMAZ**

*Department of Cardiology, Kayseri City Hospital, Kayseri, Türkiye*

**Spec. Yusuf HOŞOĞLU, MD**

*Department of Cardiology, Adıyaman Training and Research Hospital, Adıyaman, Türkiye*

---

---

## LANGUAGE EDITOR

**Assoc. Prof. Esra GÜZEL TANOĞLU**

*Department of Molecular Biology and Genetics, Institute of Health Sciences, University of Health Sciences, İstanbul, Türkiye*

---

---

## STATISTICS EDITOR

**Assoc. Prof. Turgut KÜLTÜR**

*Department of Physical Therapy and Rehabilitasyon, Faculty of Medicine, Kırıkkale University, Kırıkkale, Türkiye*

---

---

## LAYOUT EDITOR

**Hatice AKYIL**

*Biologist, MediHealth Academy, Ankara, Türkiye*

---

---

**Volume: 2      Issue: 4      Year: 2024**

---

---

**ORIGINAL ARTICLES**

---

---

Balloon embolization of bronchial artery: a new technique in massive hemoptysis .....67-71

*Torun A, Kermenli T, Azar C, Ömer I, Karataş M, Dağlı MN.*

Chronotropic incompetence in coronary slow flow ..... 72-78

*Çaylı M, Yıldırım N.*

Electrocardiographic indicators of atrial fibrillation in obstructive sleep apnea syndrome:  
a retrospective analysis of P-wave peak time..... 79-82

*Baran O, Yılmaz Y, Dişyapar MK, Yetkin NA, Özdemir F, Keleşoğlu Ş.*

The impact of systemic immune inflammation index and neutrophil/lymphocyte ratio on  
mortality in patients undergoing surgery for infective endocarditis ..... 83-88

*Balcı AB, Rahman ÖF, Kolay G, Güneş G, Yazıcı S.*

Investigation of the relationship between nutrition and coronary slow flow-coronary ectasia  
in patients with acute coronary syndrome ..... 89-95

*Kaya AF.*

The impact of body mass index on intraoperative and postoperative blood transfusion amounts  
in coronary artery bypass surgery ..... 96-99

*Çokkalender Ö, Kurt T.*

---

---

---